



**AUTOROD**  
INTERNATIONAL

# BATTERY ACCESSORIES CATALOGUE

## 2024

OUR COMMITMENT TO QUALITY, INTEGRITY, AND  
CUSTOMER SATISFACTION IS EVIDENT IN EVERY ASPECT  
OF OUR OPERATIONS.



CALL US



+971-502530752



+971-544353367

MORE INFO  
[WWW.AUTOROD.AE](http://WWW.AUTOROD.AE)








**CALL US**

 **+971-502530752**

 **+971-544353367**

# **BATTERY ACCESSORIES**

**MORE INFO**

**[WWW.AUTOROD.AE](http://WWW.AUTOROD.AE)**

# Product Description

## Circuit Breakers



**Overload protection:** Circuit breakers are designed to automatically interrupt an electrical circuit when they detect an overload, protecting against electrical hazards and damage to equipment.

**Short-circuit protection:** Circuit breakers also protect against short-circuits by automatically interrupting the flow of electricity when they detect a fault in the circuit.

**Resettable:** Most circuit breakers can be easily reset after they trip, allowing for quick and convenient restoration of power.

## Automotive fuse



Fuses come in different shapes, sizes, and amperage ratings to match the specific needs of the electrical system in a car.

They are typically made of a metal wire or filament that melts when too much current flows through it, interrupting the flow of electricity and preventing damage to the vehicle's electrical components.

## Fuse Holder



Fuse holders come in different types, including blade fuse holders, mini fuse holders, and maxi fuse holders, to match the different sizes and types of fuses used in a vehicle.

They are typically made of a durable, heat-resistant material such as plastic or metal and are designed to securely hold the fuse in place, while providing easy access for maintenance and replacement.

## Battery Terminals



Battery terminals come in two main types: positive and negative. The positive terminal is usually marked with a "+" symbol, while the negative terminal is marked with a "-" symbol. Both terminals are usually made of brass or other conductive materials and are designed to fit snugly onto the battery posts.

Battery terminals may also include a terminal cover, which is a protective cover that fits over the terminals to prevent accidental contact and provide additional protection from environmental factors such as moisture, dirt, and corrosion.

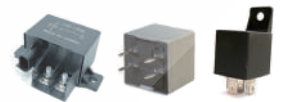
## Battery Connector



Battery connectors come in different types, including clamp connectors, eyelet connectors, and plug-and-socket connectors.

Clamp connectors, also known as battery clamps, are the most common type of battery connector and are used to secure the battery cable to the battery post. They consist of a metal clamp that fits over the battery post and a screw or bolt that tightens down to secure the cable in place.

## Relay



Relays are used in cars because they allow the control of high-power circuits with a low-power signal, typically from a switch or control module.

This helps to reduce the size and weight of the wiring and switches in a vehicle, and also helps to protect the electrical system by isolating the high-power circuit from the control circuit.

## Battery Accessories



Car battery accessories are a group of components and devices that are used to support the operation and maintenance of a car's battery.

These accessories are designed to enhance the performance, efficiency, and longevity of the battery, as well as to provide safety and protection for both the battery and the vehicle.

# Application Of Battery Accessories

Battery accessories can be used in a variety of applications, including:

**Automotive:** Battery accessories such as battery cables, terminals, and connectors are commonly used in the automotive industry to connect the battery to the vehicle's electrical system.

**Marine:** Battery accessories are also used in the marine industry for connecting and managing batteries on boats and ships.

**Renewable Energy:** Battery accessories such as charge controllers and inverters are used in renewable energy systems to manage and convert the energy stored in batteries to usable AC power.

**Backup Power:** Battery accessories can be used in backup power systems, such as uninterruptible power supply (UPS) systems, to ensure continuous power during power outages.

**Consumer Electronics:** Battery accessories such as battery cases, chargers, and adapters are commonly used in consumer electronics such as smartphones, tablets, and laptops to provide power and extend battery life.



## Features of Battery Accessories

### Durability:

Battery accessories are typically made of materials that are durable and able to withstand exposure to harsh environments, such as extreme temperatures, moisture, and chemicals.

### Corrosion resistance:

Many battery accessories, such as terminals and connectors, are designed to resist corrosion from exposure to the battery's electrolyte or other corrosive substances.

### High conductivity:

Battery accessories that are used for conducting electrical current, such as cables and connectors, are designed to have high conductivity to minimize electrical resistance and power loss.

### Easy installation:

Battery accessories are often designed to be easy to install, with features such as color-coded wires, intuitive connectors, and clear instructions.

### Safety:

Battery accessories should be designed with safety in mind, including features such as built-in fuses, circuit breakers, and over-current protection.

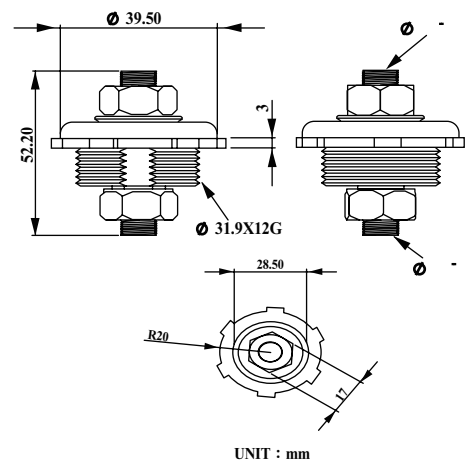
### Compatibility:

Battery accessories should be compatible with the type of battery they are designed to work with, such as lead-acid, lithium-ion, or nickel-metal hydride batteries.

1



\*Cover snaps closed to make sure everything is secure.





# Battery Accessories Series

2



## Remote Battery Terminal Replacement Boot

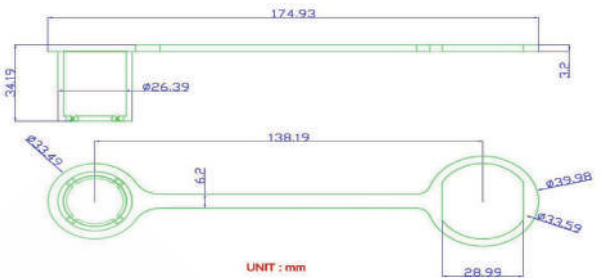
C001-079-0011

\*Part Type: Battery Terminal Caps

\*Cap Material: Plastic

\*Cap Finish: Red/Black

\*Description: Replacement Cap



## Speed Power terminal

C001-079-0012

\*Quick Release Battery Terminal Connector Caps

\*Rated Max 500 amps continuous, 800 amps surge

\*Steel terminals inside/copper plated

\*Attach to Battery Terminal by Clamping Down on Cap

\*Color coded Caps: Red positive, blue negative Clamping Down on Cap



## Remote Battery Jumper Terminal brackets

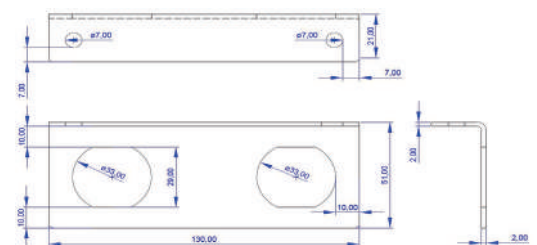
C001-079-0013

\*Bracket Material: Stainless

\*130mm Wide x 51mm High x 2mm Thick Stainless

\*Applications: 6-36 Volt DC

\*Radiused edges for a smooth finish



# Battery Accessories Series

3

## Battery Stud Terminal block

C001-079-0023



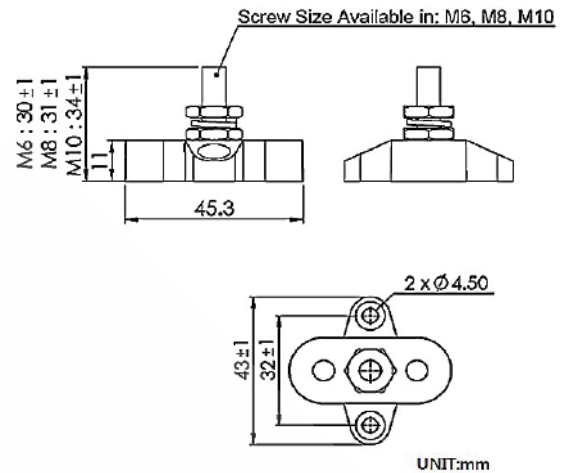
\*Allow terminating of heavy-duty cables for one or more connections

\*Red or Black color allowing easy and clear color coding for wiring

\*Glass Fiber reinforced Nylon base ensures great mechanical strength and durability

\*Max Operating Voltage DC 48V

\*Max Amp per circuit Determined by wires connected



## Battery Terminal Stud

C001-079-0024



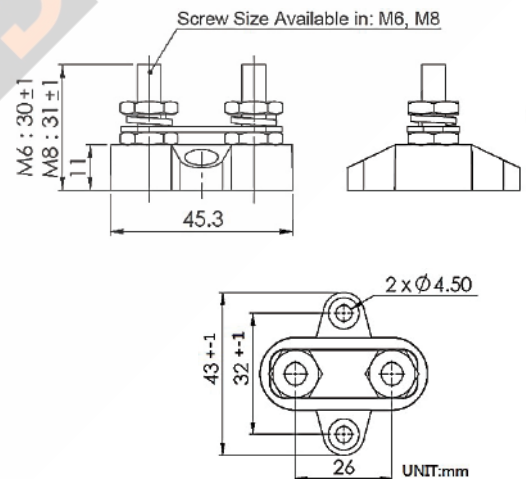
\*Allow terminating of heavy-duty cables for one or more connections

\*Red or Black color allowing easy and clear color coding for wiring

\*Glass Fiber reinforced Nylon base ensures great mechanical strength and durability

\*Max Operating Voltage DC 48V

\*Max Amp per circuit Determined by wires connected



## BATTERY SWITCH

C001-079-0025



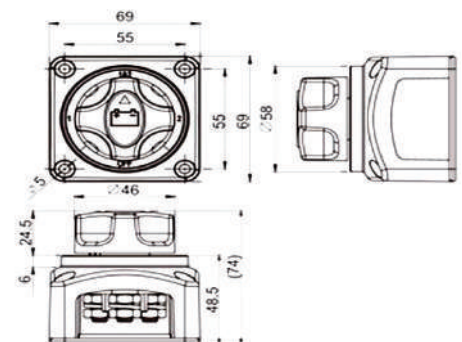
\*MATERIAL: Frame is PBT (UL frame: 94V-0) with black color.

\*Actuator: PBT (UL frame: 94HB) with red color.

\*Wire screw for connection: copper tinned 3 pcs.

\*Wire nut for connection: copper tinned 6 pcs.

\*Wire outlet direction: any of 4 directions.



# Battery Accessories Series

4

## BATTERY SWITCH

C001-079-0026



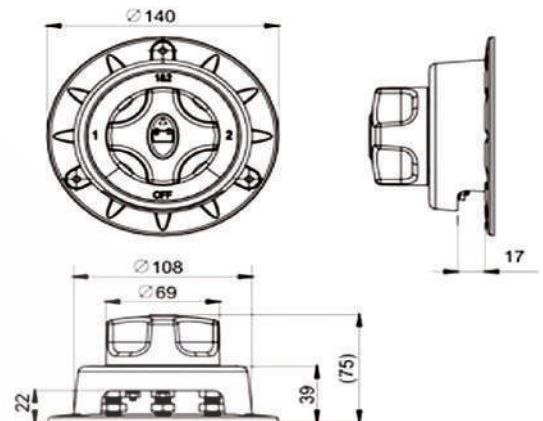
\*MATERIAL: Frame is PBT (UL frame: 94V-0)with black color.

\*Actuator: PBT (UL frame: 94V-0)with red color.

\*Wire screw for connection: bronze 3 pcs+sensor 2 pcs.

\*Wire nut for connection: bronze 4 pcs+sensor 4 pcs.

\*Wire outlet direction: single outlet, downside. Battery shut down sensor.



## BATTERY SWITCH

C001-079-0027



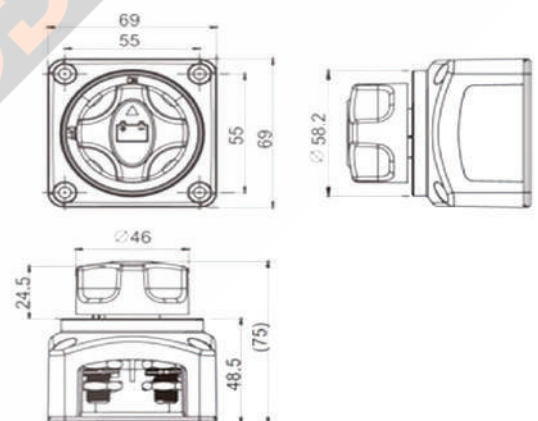
\*MATERIAL: Frame is PBT (UL frame: 94V-0)with black color.

\*Actuator: PBT (UL frame: 94V-0)with red color.

\*Wire screw for connection:copper tinned 2 pcs.

\*Wire nut for connection: bronze tinned 4 pcs.

\*Wire outlet direction: any of 4 directions.



## BATTERY SWITCH

C001-079-0028

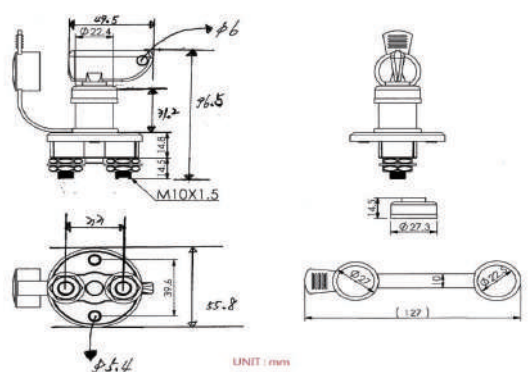


\*instantaneous 500Amps@12Volts DC

\*nominal load 350Amps@12Volts DC

\*Wire screw for connection: 2 pcs screws.

\*Wire nut for connection: 4 pcs nuts.





# Battery Accessories Series

5



## Dual Heavy-Duty Terminal Studs

C001-079-0029

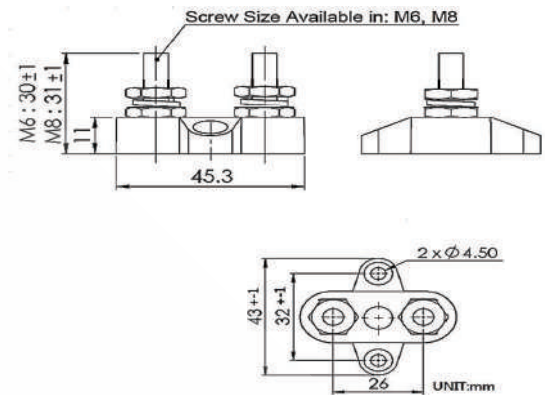
\*Allow terminating of heavy-duty cables for one or more connections

\*Red or Black color allowing easy and clear color coding for wiring

\*Glass Fiber reinforced Nylon base ensures great mechanical strength and durability

\*Max Operating Voltage DC 48V

\*Max Amp per circuit Determined by wires connected



## Security Flip Cover

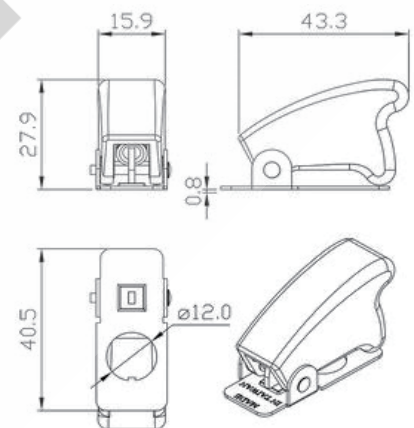
C001-079-0030

\*Length: 40.5 x 15.9 x 27.9 mm (LxWxH)

\*The diameter of screw hole: 12mm

\*Color: Red

\*Material: Plastic metal



## BATTERY SWITCH

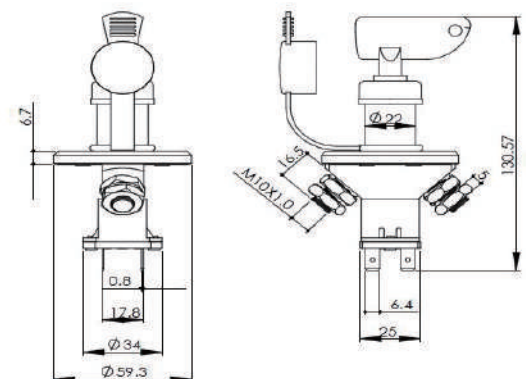
C001-079-0031

\*Nominal operating voltage: 12V/24V

\*Max. continuous operating current: 150A @ 24V

\*Overall height (inc. key): 130.57mm

\*6.4mm terminals current rating: 5A



# Battery Accessories Series

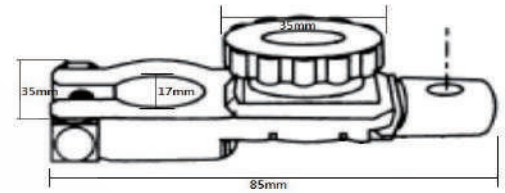
6

## Swan Type Battery Terminal

C001-079-0032



- \*Top post battery disconnect switch
- \*Material: zinc alloy , Finish: copper-plated
- \*Fits 6, 12 or 24V top post batteries
- \*Switch off power with the turn of green knob
- \*Remove knob for anti-theft function

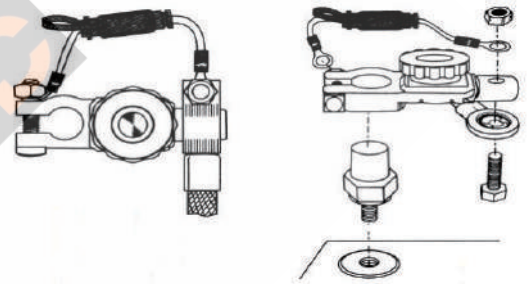


## Theft Battery Master Switch Kit

C001-079-0033



- \*It is a anti-theft master switch
- \*Used for top post batteries
- \*It is complete with ATP fuse holder
- \*Contains one ATO-20A fuse
- \*It has got ring terminals and stainless steel bolt and wing nut

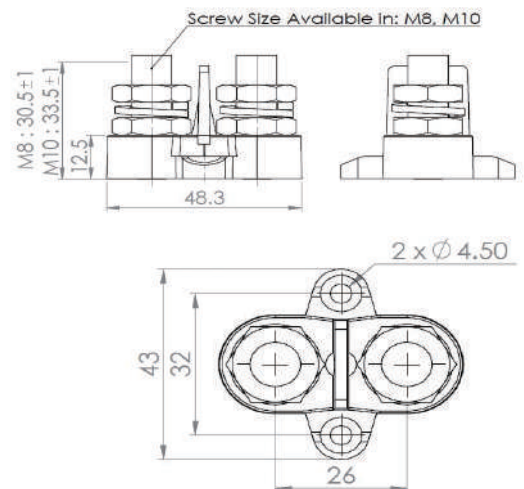


## Dual Heavy-Duty Terminal Studs with Isolating Plate

C001-079-0034



- \*Allow terminating of heavy-duty cables for one or more connections
- \*Red or Black color allowing easy and clear color coding for wiring
- \*Glass Fiber reinforced Nylon base ensures great mechanical strength and durability
- \*Max Operating Voltage DC 48V
- \*Max Amp per circuit Determined by wires connected



# Battery Accessories Series

7



## Battery terminal

C001-079-0035

\*(1)- 5/16" Wing Nut

\*Terminal: brass

\*Screw: (steel, Ni plated), (brass), (Stainless)

\*Approval: RoHS



## Battery terminal

C001-079-0036

\*(1)- 4 Awg

\*Terminal: brass

\*Screw: (steel, Ni plated), (brass), (Stainless)

\*Approval: RoHS



## Battery terminal

C001-079-0037

\*(1) - 4 AWG , (2)- 8 AWG

\*Terminal: brass

\*Screw: (steel, Ni plated), (brass), (Stainless)

\*Approval: RoHS



## Battery terminal

C001-079-0038

\*(1)- 3/8" Wing Nut

\*Terminal: brass

\*Screw: (steel, Ni plated), (brass), (Stainless)

\*Approval: RoHS



# Battery Accessories Series

8



## Battery terminal

C001-079-0039

\*(1)- 0 AWG

\*Terminal: brass

\*Screw: (steel, Ni plated), (brass), (Stainless)

\*Approval: RoHS



## Battery terminal

C001-079-0040

\*(1)- 0 AWG , (2) - 8 AWG

\*Terminal: brass

\*Screw: (steel, Ni plated), (brass), (Stainless)

\*Approval: RoHS



## Battery Isolation Switch

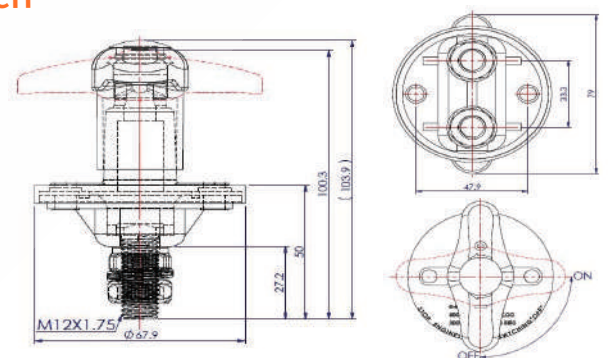
C001-079-0041

\*Total Height: ON - 100.3mm

\*Total Height: OFF - 103.9mm

\*Rating: 12V-24V 500Amps

\*Rating: 12V-24V 2000Amps(10 Seconds)



## TOGGLE SWITCH

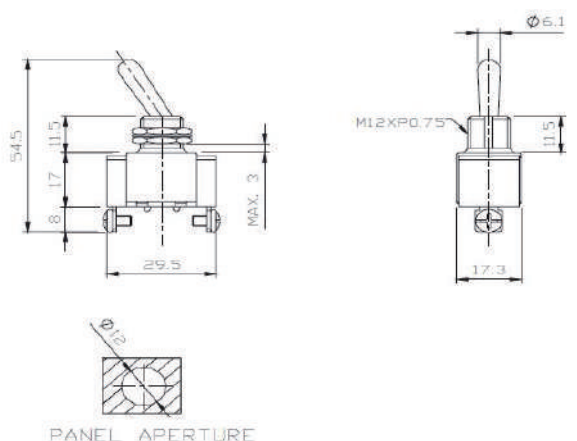
C001-079-0042

\*Momentary On-Off 12V 20Amps

\*2 Screw Terminals

\*Mounting Stem 15/32" Diameter

\*15/32" Long





# Battery Accessories Series

10



## BATTERY SWITCH

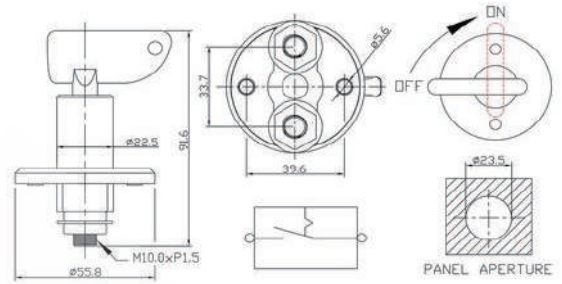
C001-079-0046

\*instantaneous 500Amps@12Volts DC

\*nominal load 350Amps@12Volts DC

\*Wire screw for connection: 2 pcs screws.

\*Wire nut for connection: 4 pcs nuts.



## BATTERY SWITCH

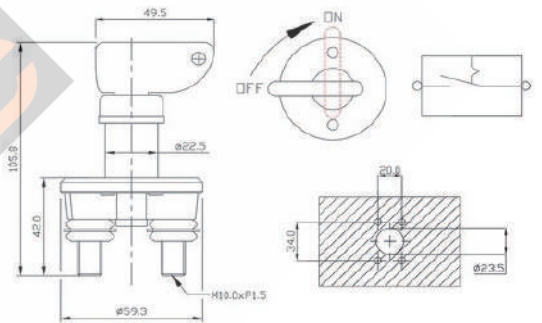
C001-079-0047

\*instantaneous 500Amps@12Volts DC

\*nominal load 350Amps@12Volts DC

\*Wire screw for connection: 2 pcs screws.

\*Wire nut for connection: 4 pcs nuts.



## BATTERY SWITCH

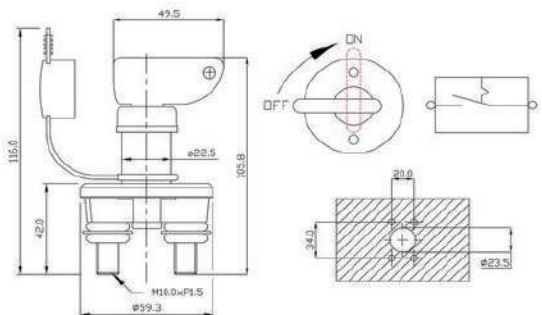
C001-079-0048

\*instantaneous 500Amps@12Volts DC

\*nominal load 350Amps@12Volts DC

\*Wire screw for connection: 2 pcs screws.

\*Wire nut for connection: 4 pcs nuts.





# Battery Accessories Series

11



## BATTERY SWITCH

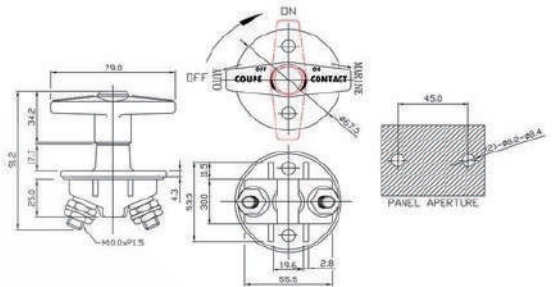
C001-079-0049

\*instantaneous 500Amps@12Volts DC

\*nominal load 350Amps@12Volts DC

\*Wire screw for connection: 2 pcs screws.

\*Wire nut for connection: 4 pcs nuts.



## BATTERY SWITCH

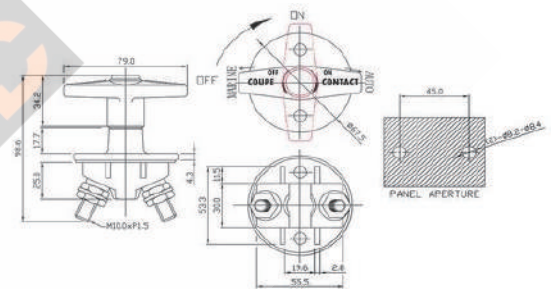
C001-079-0050

\*instantaneous 500Amps@12Volts DC

\*nominal load 350Amps@12Volts DC

\*Wire screw for connection: 2 pcs screws.

\*Wire nut for connection: 4 pcs nuts.



## BATTERY SWITCH

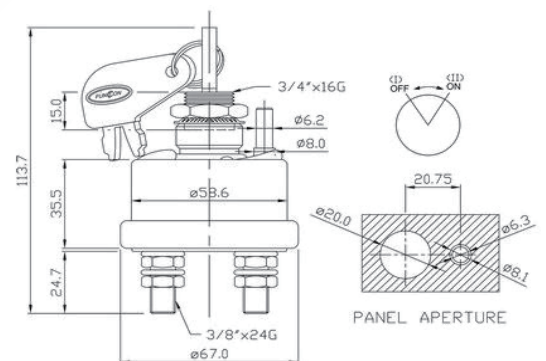
C001-079-0051

\*Rating:450Amps 12V Momentary

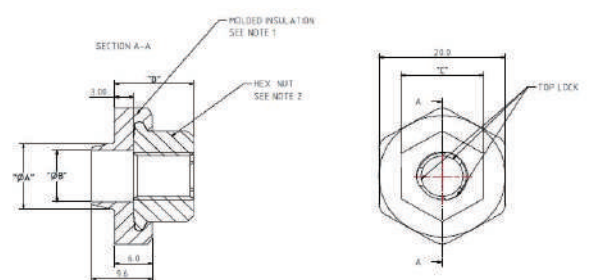
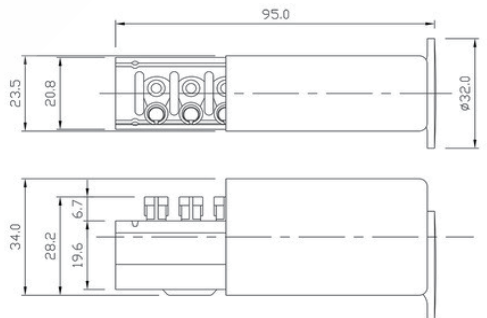
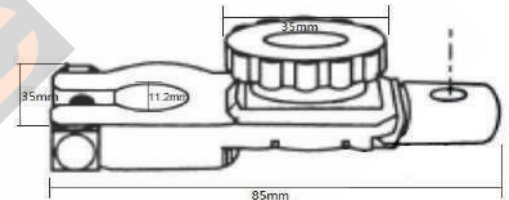
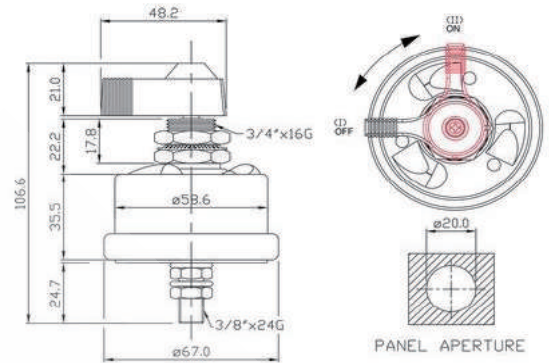
\*250Amps 12V Continual

\*Wire screw for connection: 2 pcs screws.

\*Wire nut for connection: 4 pcs nuts.



## 12



# Battery Accessories Series

13



## SPST Single Pole Metal Body Battery Disconnect

C001-079-0056

\*Can be used with 8V up to 60V DC systems to isolate and secure the electrical system.

\*Rated at 1250 Amps momentary @ 12V DC, 200 Amps continuous 12V DC.

\*2 Copper Stud terminals for Master Disconnect and individually sealed contacts.

\*One piece die-cast housing sealed with O-rings at base and mounting stem protects against dust and moisture.

\*Terminal studs: 10mm diameter. with O-rings at base and mounting stem protects against dust and moisture.



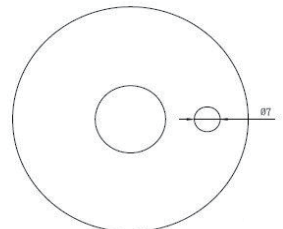
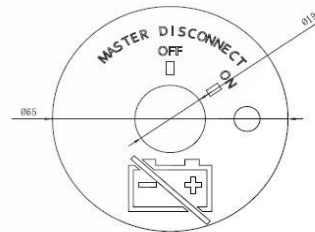
## Face Plate-SWITCH BATTERY MASTER DISCONNECT

C001-079-00561

\*Material: Aluminum.

\*Thickness: 0.8mm.

\*Outer diameter: Ø65



## SWITCH DISCONNECT BATTERY

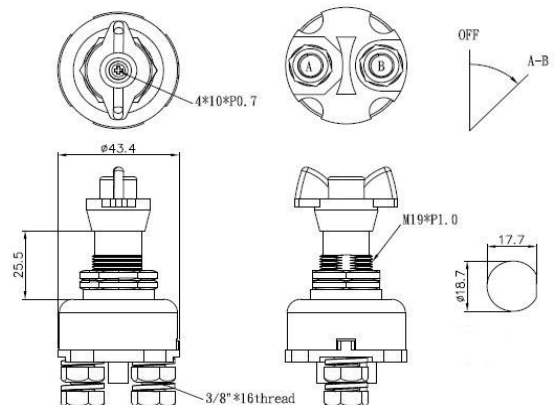
C001-079-0057

\*Di-Electric withstanding voltage : 1000V / 1 min.

\*Operating voltage range : 12~24VDC

\*Duty Rating Continuous : 12V 100Amps

\*Intermittent rating : 1000Amps in rush Continuous : 12V 100Amps





# Battery Accessories Series

14



## SWITCH BATTERY DISCONNECT

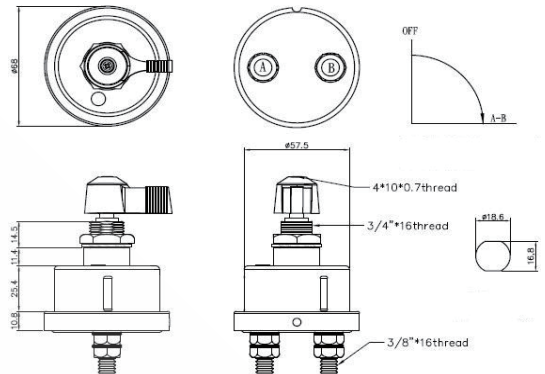
C001-079-0058

\*Di-Electric withstanding voltage : 1000V / 1 min.

\*Operating voltage range : 6~36VDC

\*Duty Rating Continuous : 12V 125Amps

\*Intermittent rating : 1000Amps in rush



## PANEL START IGNITION

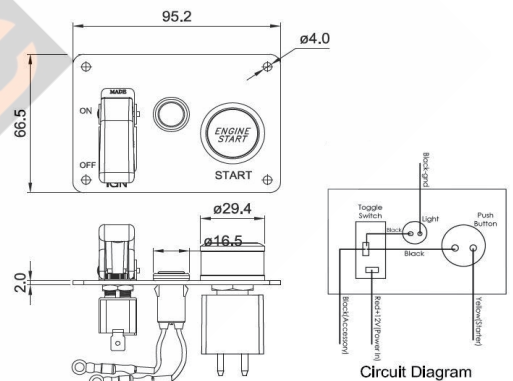
C001-079-0059

\*Material: Aluminium alloy and plastic

\*Include Pilot Lamp/Toggle Switch/Starter Button Switch

\*With Security Flip Cover

\*Brass hexnut



## Lockout Lever Battery Disconnect Switch

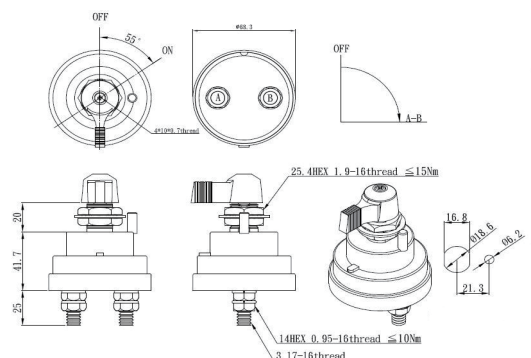
C001-079-0060

\*Di-Electric withstanding voltage : 1000V / 1 min.

\*Operating voltage range : 6~36VDC

\*Duty Rating Continuous : 24V 180Amps

\*Intermittent rating : 1000Amps in rush



# Battery Accessories Series

15



## Door Push-Button Switches

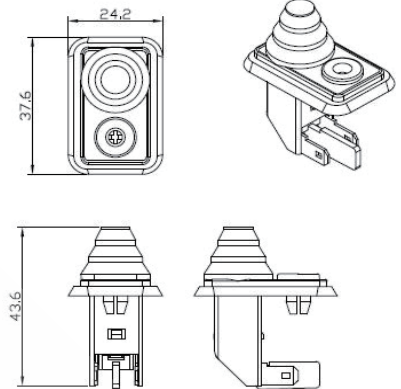
C001-079-0061

Description : Door momentary switch

Terminals : 2 Blade

Sealing : Rubber boot

Details : With boot; this part is obsolete

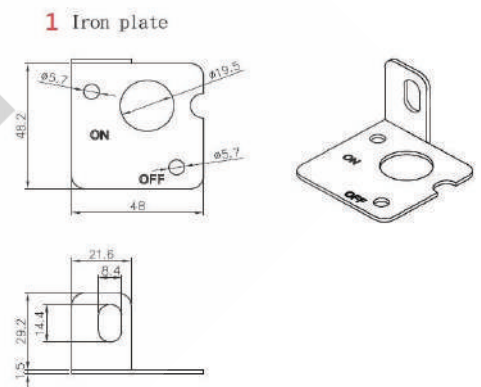


## Lock-out Lever Kit

C001-079-0062

Bill of Material :

SL.NO.	Part Name	Material	Unit/PC
1	Iron plate	Iron	1
2	Screw	Iron	2
3	Lever+Drill hole+Vibration	Die-Casting	1



## Battery Main Switch (On-Off)

C001-079-0063

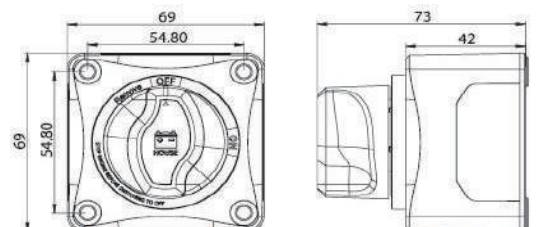
\*Cranking Rating(10 Secs)| DC 1250A

\*Intermittent Rating(5 mins)| DC 455A

\*Continuous Rating| DC 275A

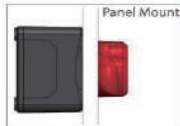
\*Voltage Rating| DC 48V Terminal Studs|M10(3/8")

\*Meet Ignition Protection Standard (ISO8846 / SAE J1171)



# Battery Accessories Series

16



## Battery Main Switch (On-Off with AFD)

C001-079-0064

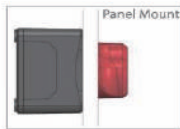
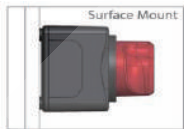
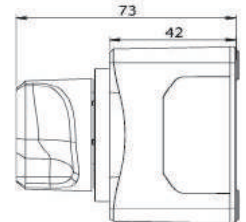
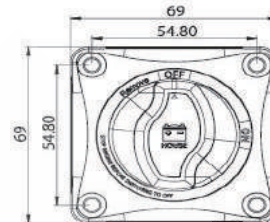
\*Cranking Rating(10 Secs)| DC 1250A

\*Intermittent Rating(5 mins)| DC 455A

\*Continuous Rating| DC 275A

\*Voltage Rating| DC 48V Terminal Studs|M10(3/8")

\*Meet Ignition Protection Standard (ISO8846 / SAE J1171)



## Battery Selector Switch (1-2-Both-Off)

C001-079-0065

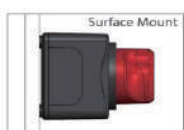
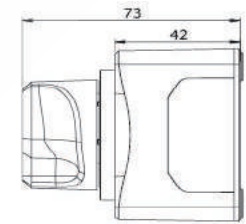
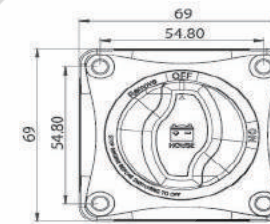
\*Cranking Rating(10 Secs)| DC 1000A

\*Intermittent Rating(5 mins)| DC 300A

\*Continuous Rating| DC 200A

\*Voltage Rating| DC 48V Terminal Studs|M8(5/16")

\*Meet Ignition Protection Standard (ISO8846 / SAE J1171)



## Battery Selector Switch (1-2-Both-Off with AFD)

C001-079-0066

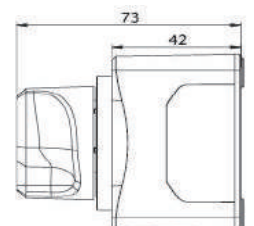
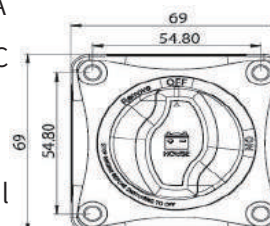
\*Cranking Rating(10 Secs)| DC 1000A

\*Intermittent Rating(5 mins)| DC 300A

\*Continuous Rating| DC 200A

\*Voltage Rating| DC 48V Terminal Studs|M8(5/16")

\*Meet Ignition Protection Standard (ISO8846 / SAE J1171)





# Battery Accessories Series

17



## Battery terminal

C001-079-0067

\* (1)- 4 Awg

\* Terminal: brass

\* Screw: (steel, Ni plated), (brass), (Stainless)

\* Approval: RoHS

Specification	For one 4AWG cable
Size	Length : 50mm Width : 45mm Height : 16.2mm
Weight	Positive : 67.5g Negative : 70g



## Battery terminal

C001-079-0068

\* (1)- 4 Awg

\* Terminal: brass

\* Screw: (steel, Ni plated), (brass), (Stainless)

\* Approval: RoHS

Specification	For one 4AWG cable
Size	Length : 50mm Width : 45mm Height : 16.2mm
Weight	Positive : 67.5g Negative : 70g



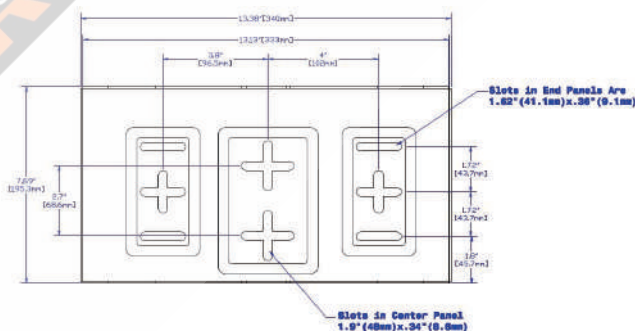
## Large Battery Tray

C001-079-0070

\* 7 inches × 13 inches

\* Vinyl coated

\* Material: steel



## Rock switch with 3 colors of logo

C001-079-0071

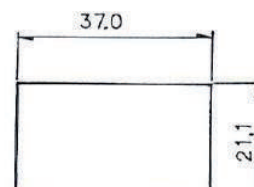
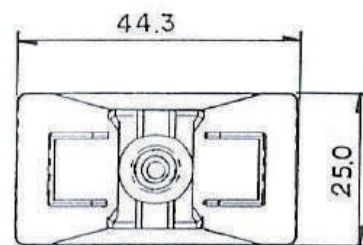
\* Contact resistance: 20MΩ max. (initial)  
Insulation resistance: 100MΩ min. (at 500VDC)

\* Dielectric strength: 1,500VAC 50/60 Hz for 1 minute

\* Service life: Mechanically: 100,000 operations min , Electrically: 30,000 operations min.

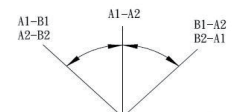
\* Rating: 20 A 12 VDC / 15 A 24VDC  
Mechanically: 100,000 operations min , Electrically: 30,000 operations min.

\* Circuit-Position S.P.D.T , Function: M.ON - OFF - M.ON  
12VDC / 15A 24VDC  
Mechanically: 100,000 operations min , Electrically: 30,000 operations min.



Panel Cutout

## 18



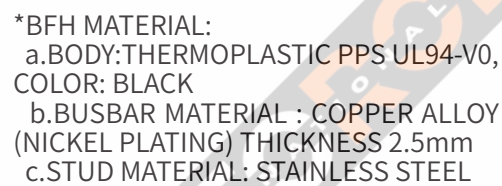
## 19



\*ALLOWS SWITCH TO BE LOCKED INTO THE OFF POSITION IN YELLOW



\* RATINGS: VOLTAGE: 58VDC MAX.  
AMPERAGE: 300A MAX.



\*BFH MATERIAL:  
a. NUT-STEEL (ZINC PLATING) , SELF-LOCKING  
b. HOUSING THERMOPLASTIC PPS  
UL94-V0, COLOR: BLACK



MAXIMUM TORQUE: 12N.m(122.4Kgf-cm)

PACKAGE : ALL PARTS ASSEMBLED.  
1PCS/BAG, 10PCS/INNER BOX,  
100PCS/CARTON



# Battery Accessories Series

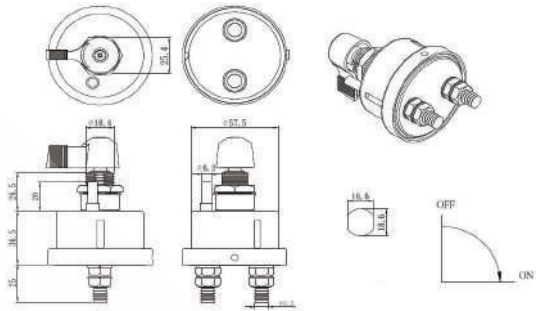
20



## SWITCH BATTERY DISCONNECT

C001-079-0085

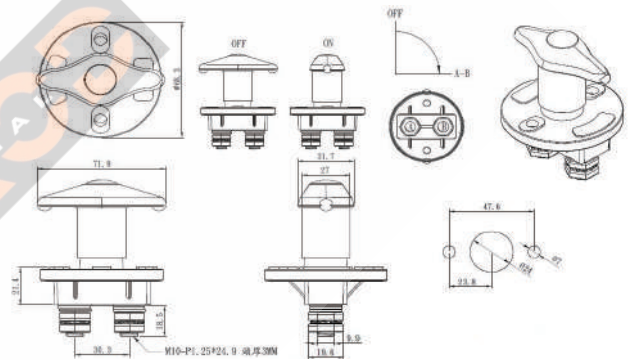
- \*Di-Electric withstanding voltage :1000V / 1 min.
- \*Operating voltage range:6~36VDC
- \*Duty Rating Continuous:24V 300A
- \*Intermittent rating:22V 1500A 15seconds



## SWITCH BATTERY DISCONNECT

C001-079-0086

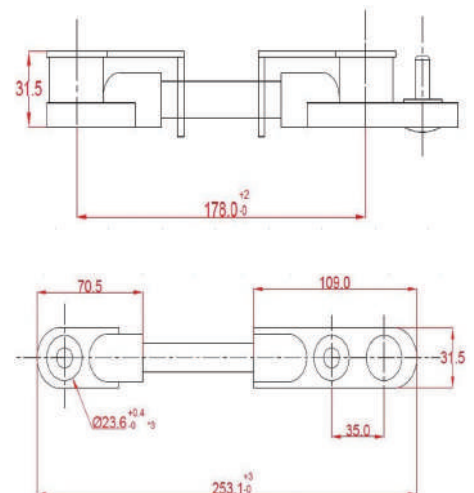
- \*24VDC 300 Amps continuous
- \*1000Amps/10 sec.
- \*Terminal: M10
- \*Meet IP 65



## Vehicle Battery Terminal Connector By Two Terminals

C001-079-0302

- \* Input Rating Voltage: 12VDC ~48VDC
- \*Input Rating Current : 220A (normal operation) , 250A max
- \*Housing Material : PVC
- \*Body Material : Cu + Ni alloy ( bare copper twist ) with PVC insulating
- \* Power Cord Diameter : 61 mm<sup>2</sup> ( wire spec : AWG 0 ) ~48VDC
- \*Polar Color : Positive ( + ) for Red color , Negative ( - ) for Black color Current : 220A (normal operation) , 250A max
- \*Operating Temperature: -20 °C to +130°C Material : PVC
- \* Dimensions ( L \* W \* H ) : 253.0\*31.5\*31.5mmMaterial : Cu + Ni alloy ( bare copper twist ) with PVC insulating



# Battery Accessories Series

21

## Vehicle Battery Terminal Connector By Three Terminals

C001-079-0303



\*Input Rating Voltage: 12VDC ~48VDC

\*Input Rating Current : 220A (normal operation) , 250A max

\*Housing Material : PVC

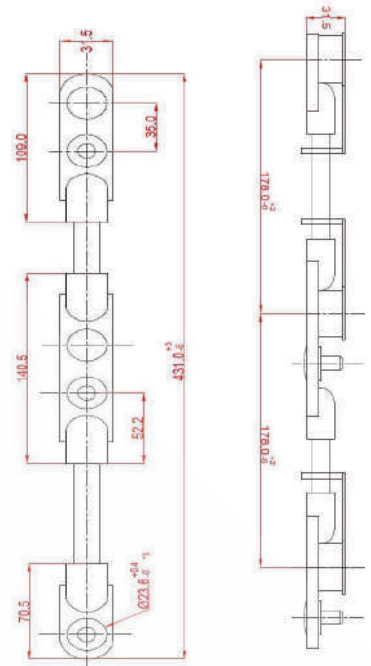
\*Body Material : Cu + Ni alloy ( bare copper twist ) with PVC insulating

\*Power Cord Diameter : 61 mm<sup>2</sup> ( wire spec : AWG 0 )

\*Polar Color : Positive( + ) for Red color , Negative ( - ) for Black color

\*Operating Temperature: -20 °C to +130°C

\* Dimensions ( L \* W \* H ) : 431.0\*31.5\*31.5mm



## Vehicle Battery Terminal Connector By Four Terminals

C001-079-0304



\*Input Rating Voltage: 12VDC ~48VDC

\*Input Rating Current : 220A (normal operation) , 250A max

\*Housing Material : PVC

\*Body Material : Cu + Ni alloy ( bare copper twist ) with PVC insulating

\*Power Cord Diameter : 61 mm<sup>2</sup> ( wire spec : AWG 0 )

\*Polar Color : Positive( + ) for Red color , Negative ( - ) for Black color

\*Operating Temperature: -20 °C to +130°C

\* Dimensions ( L \* W \* H ) : 609.0\*31.5\*31.5mm

